



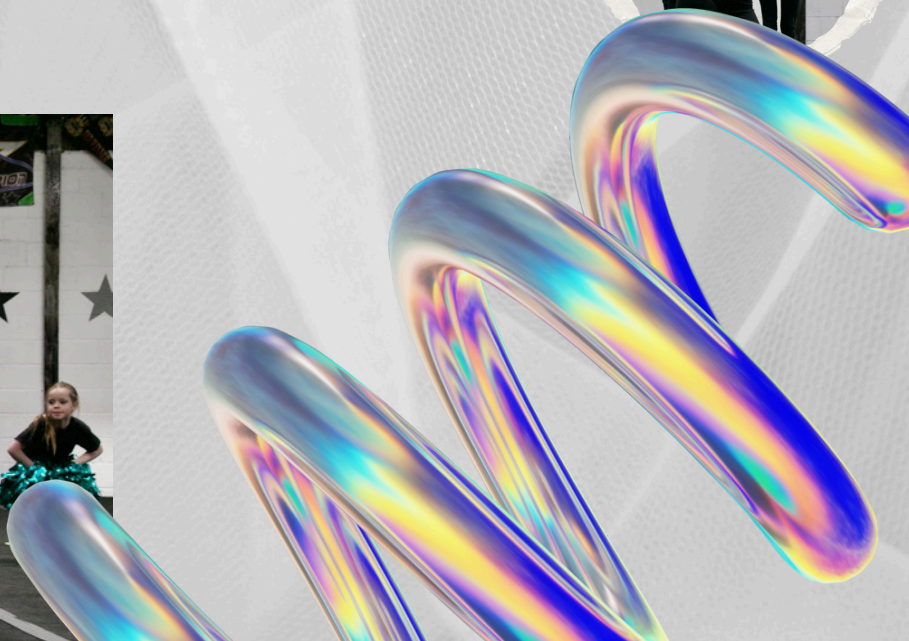
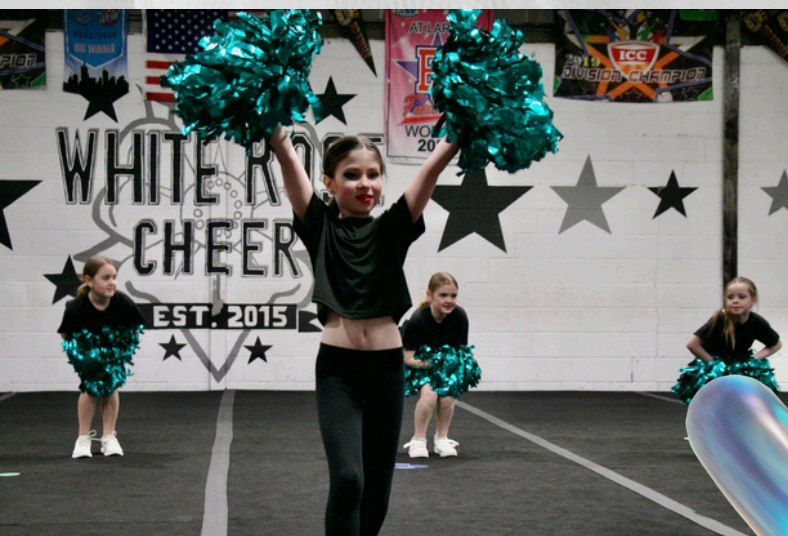
White Rose Cheer

Season 10
2024-2025

Handbook Contents

Page no.

- 3. How To Find Us & Contact Information
- 4. Why White Rose Cheer?
- 5. Placement Week 2024
- 6. Placement Week 2024 - Additional Dates
- 7. Signing Up For Season 10
- 8. International Travel Teams Overview
- 9. Our Cheerleading Streams
- 10. What Else Do We Offer?
- 11. Competitive Teams for Season 10
- 12. Competition Schedule
- 13. Tumbling
- 14. Payments and Fees
- 15. Payments and Fees - Details and Discounts
- 16. Uniform and Training Kit
- 17. The Small Print - Important!



How To Find Us

"The White House" can be found at

4 Gildersome Cross

Gelderd Road

Gildersome

Leeds

LS27 7BF

We are behind "The Bathroom House", just past the M62 J27/M621 Junction.



White Rose Cheer



@whiterosecheer1



www.whiterosecheer.net



White Rose Cheer



@whiterosecheer

@whiterosecheertumble

- whiterosecheer@gmail.com - Program Director, Admin Staff, General Enquiries
- wrcabsences@gmail.com - Registering an absence
- whiterosecheertumble@gmail.com - Head of Tumbling, Courtney Gorman
- wrcwelfareofficer@gmail.com - Welfare/Safeguarding Officers, Tracy Findlay and Carolyn Gorman-Wray
- whiterosecheerkitofficer@gmail.com - Kit Officer, Cheryl Pemberton

Why White Rose Cheer?

White Rose Cheer was founded in September 2015, bringing the thrill of cheerleading to children in South Leeds and beyond. Since then, our journey has been marked by success, driven by several key factors:

- Our exceptional cheerleading facility located in Gildersome, Leeds, stands out as a premier venue in our region, plus the only gym dedicated to cheerleading.
- Our remarkable coaching team. All staff are qualified to the highest levels, and hold fully enhanced DBS checks, first aid and safeguarding qualifications, and hold a host of Regional, National and International titles under their belts.
- Travelling the world? Absolutely! From the USA to Barcelona, Amsterdam, and Germany, we are now preparing for further travels into Europe and Orlando, Florida during Season 10, following the receipt of six bids to travel to the USA.
- We thrive on flawless Zero moments (no deductions!) and securing titles from local competitions to global World Level events.
- Community engagement is central to our values. Whether partnering with Leeds University Celtics or involving our local teams in the rental of our facility, we love being a hub in our region.
- Our affordable pricing ensures accessibility for all to join our programs. We advocate for inclusivity among all cheerleaders!
- We provide opportunities for all age groups and skill levels, from young beginners to seasoned athletes, offering various classes to showcasing ALL talent levels. Our focus is on fun, with a sprinkle of sparkle and enthusiasm!



Placement Week 2024

Day	Age Group	Placement Week Event
Monday 22nd July	Tiny/Mini 3-8 years	5.00-6.30pm - Placement Evening - a fun, informal session for this age group!
Monday 22nd July ***** Tuesday 23rd July	Youth & U12 9-12 years	6.30pm onwards - Tumbling Evaluations ***** 5.00-7.00pm - Placement Evening - stunting, tumble timing, dance, jumps, and everything else.
Tuesday 23rd July ***** Wednesday 24th July	Junior & U16 13-16 years	7.00pm onwards - Tumbling Evaluations ***** 5.00-7.00pm - Placement Evening - stunting, tumble timing, dance, jumps, and everything else.
Wednesday 24th July ***** Thursday 25th July	Senior, U18 and Open 15 years +	7.00pm onwards - Tumbling Evaluations ***** 5.00-6.30pm - Placement Evening Senior Levels 1-2* - stunting, tumble timing, dance, jumps, and everything else 6.30-8.00pm - Placement Evening Senior Levels 3-5* plus all Non-Tumbling

**Seniors will be informed which session to attend on Thursday 25th July following their tumbling evaluation on Wednesday 24th July. Athletes that do not wish to do a tumbling evaluation will just attend the Non-Tumbling session from 6.30-8.00pm automatically.*

What is important to remember on Placement Week?

- Placements are NOT SCARY. They are a chance for us to evaluate everyone's current skill set and POTENTIAL throughout the season, which is equally as important.
- Each athlete will be expected to attend the tumbling evaluation AND the regular Placement Evening for their AGE GROUP, regardless of which team(s) they hope to compete in this year. We will invite athletes to an older age group if we deem it appropriate. If we don't invite your athlete to an older age group, this doesn't mean they won't be considered for one in the Placement process - we may simply have seen everything we need to see!
- Please ensure that you are on time, dressed appropriately, without jewellery, hair tied back, with a bottle of water/drink and have the correct footwear. This all matters - we are considering your attitudes JUST as much as your skill set!
- Placements are CLOSED to all parents, and are not able to be observed.
- We will have all placements released by Wednesday, 31st July.
- If you cannot attend Placement Week because you are away, don't worry. All athletes will have the opportunity to book a Tumbling Evaluation on an earlier date, and we will place based on what we already know of them.
- If you are new to our program, and cannot attend Placement Week, it would be helpful if you submitted a video of your current skill set. Please send this to whiterosecheer@gmail.com.
- If you are joining us mid-season and have missed Placement Week, please email us on whiterosecheer@gmail.com. We'll be able to have you/your athlete in for a FREE class where we will informally assess them, and ensure they can be placed on the correct team for them.

Placement Week 2024 - Additional Important Dates

Extra Event	Dates/Times
Flyer Evaluations (£3)	Thursday 11th July , 5pm onwards Monday 22nd July , 5pm onwards <i>For Non-Flyers wishing to be evaluated, and for all new flyers to our program. Existing WRC flyers do NOT need to book and will be assessed during our regular Placement Week. These can be booked on Coacha.</i>
Tumbling Evaluations (£4)	Thursday 11th July , 7pm onwards Saturday 13th July , 4-7pm <i>For all athletes who will not be present during Placement Week. Please reach out to us and let us know if neither of these dates work for your athlete. These can be booked on Coacha.</i>
Pre-Placement Camps (all bookable on Coacha)	<ul style="list-style-type: none"> • Advanced Tiny/Mini Camp, Ages 6-8, Friday 12th July 5.00-6.30pm (£10) • Intermediate NT Camp, Ages 8+, Friday 12th July 6.30-8.00pm (£10) • Advanced Junior Camp, Ages 8-15, Sunday 14th July 10.00-12.00pm (£15) • Levels 5-7 Camp, Ages 10+, Monday 15th July, 6.00-8.00pm (FREE for current Icons/Idols, and £15 for all other athletes) • Advanced NT Camp, born 2009 and older, Thursday 18th July, 7.30-9.00pm (£10)

What do we look for when we place athletes on a team?

- In short - we look for a HUGE range of factors when we place a team!
- Skill Set and Potential - can the athletes perform the "required" skills for the level that we're looking to place in both tumbling and stunting? Can they perform them during long practices, during competition runs, under pressure in a competitive environment? Do we know they will work hard to improve the skill set they already have?
- Attitude and Demeanour - are they motivated to work hard? Are they coachable? Do we know that we can rely on them to perform whichever skill and stunting position that the team needs them to do?
- Attendance and Punctuality - do they show up each and every week in accordance with our Attendance Policy? Do they honour Red Zone periods for competition? Are they frequently late to practice and/or competitions? Do they consistently put other things before their commitment to the team?
- Team cohesion - will THIS team gel well? Do all the skills and attributes compliment each other? Do we know that they will be successful as one entire unit, aswell as individuals?
- Athlete availability - has an athlete declared that they cannot make this particular training day, or we know they can't make the scheduled choreography? The wider your flexibility, the better chance you have of making the right team!
- Financial Record - we will be unable to place any athletes in Season 10 who have an outstanding record of missed payments.

Signing up for Season 10

Step One - Create an account on Coacha (New Athletes Only)

If you are a new athlete to WRC, you will need to create an account on Coacha to ensure you can book camps, sort billing, and ensure that we have all your contact details. You can do this following the below link:

https://hosted-uk.coacha.app/member_signup/whiterosecheer

Step Two - Fill in a Season 10 Interest Form

ALL athletes need to fill in an Interest Form, to help coaches know your wishes, preferences, availability, and intentions for the season. This is a formal request to place your athlete on a team. You can do this following the below link:

<https://forms.gle/Hy5qu4Ej1xFtutL67>

Step Three - Attend your Tumbling Evaluation

All athletes need their tumbling assessed by the WRC Coaching Staff. For athletes attending in person, this is the first night of their Placement Session (see the timetable on pg5). These are FREE of charge and you don't need to book. If your athlete is not able to attend in person, they can book a Tumbling Evaluation in a different session (see the timetable on pg6). These can be booked on Coacha.

Step Four - Attend your Placement Evening

All athletes need to attend their regular Placement Session to be assessed by the WRC Coaching Staff. For athletes attending in person, this is the second night of their Placement Session (see the timetable on pg5). These are FREE of charge and you don't need to book. If your athlete is not able to attend in person, we will assess and place them based on what we already know of them. If they are a new flyer and wish to book an evaluation, this can also be booked on Coacha.

Step Five - Get Excited for the Results!

We endeavour to inform all athletes/parents about their Placement Results on or by Wednesday 31st July. We will be revealing our International Travel Teams live at the gym in an in-person Team Reveal on this evening. Domestically, all Season 10 athletes will be informed via email of their result. In the coming weeks following this date, there will be a very detailed email sent to each individual athlete, which will lay out how their personal season will look - all events, training times, dates to be aware of, financial contributions and everything else.

International Travel Teams

For more details on our International Travel Teams and International Program in general, please see the International Handbook for Season 10, which can be found in the Documents Section of our website.

We are so proud to present our Bid-Winning Teams for Season 10, who have been especially invited to attend World Level events in Orlando, Florida, during April/May 2025.

If any more teams become the recipients of Bids, we will update this list.

ODYSSEY

Youth 1

ASW
Orlando, Florida
April 2025

OPTIMUM

Youth 2

ASW
Orlando, Florida
April 2025

OBSESSION

Senior 4.2

ASW
Orlando, Florida
April 2025

ICONS

U18 5

IASF Worlds
Orlando, Florida
April 2025

ODYSSEY

U12 1

Nfinity Finals
Orlando, Florida
May 2025

OUTLAWS

U16 2

Nfinity Finals
Orlando, Florida
May 2025

We are also considering the possibility of entering some teams as Monthly Training teams, that compete at the Elite Cheerleading Championships in Bottrop, Germany, between 7-9th June 2025. You will be able to indicate interest on your Season 10 Interest Form if you wish to be considered to be placed on one of these teams! This is NOT an inclusive list and all final decisions will be made during Placement Week.

RIVALS

Youth 0/1

ECC
Bottrop, Germany
June 2025

RENEGADE

Junior 3

ECC
Bottrop, Germany
June 2025

ROYAL

Senior 4

ECC
Bottrop, Germany
June 2025

Our Cheerleading Streams

Recreational Cheerleading and Tumbling Academy

Our Recreational Streams - Oysters Cheerleading and Tumbling Academy - offer low commitment, low-cost sessions without competitions. Just join in, practice stunts and tumbling, and explore the world of cheerleading or tumbling in a fun, well-equipped setting. This season, we have 15 small groups within Tumbling on a Saturday to enable everyone to progress correctly, plus a projected 2 weekly Recreational Oysters Classes.

Novice Teams

Our Novice teams are our most affordable competition teams as they require less training time and have a lighter competition schedule. These teams are designed for younger, newer athletes and will receive a rating at competitions, not a placement. Novice teams will compete in four competitions annually, all located within a 90-minute drive from Leeds. Additionally, tumbling on Saturdays is included in the monthly fees.

Prep Teams

Our Prep teams are designed for intermediate athletes, with slightly less demanding competitive standards than Allstar teams but more challenging than Novice teams. Prep teams will participate in four competitions annually, all within a 90-minute drive from Leeds. Additionally, all Prep Teams will have the opportunity for a Choreography Day, and Saturday tumbling is included in the monthly fees.

Allstar Teams

Our Allstar teams, designed for dedicated and competitive athletes, train once a week. At the start of the season, these teams have a special choreography day. They will compete in four to five annual competitions, all located within a 90-minute drive from Leeds. Monthly fees cover tumbling sessions on Saturdays.

Elite Teams

Our Elite teams, designed for our most advanced, dedicated and competitive athletes, train once or twice a week. At the start of the season, these teams have a special choreography day. They will compete in four to five annual competitions, including several National Events. Monthly fees cover tumbling sessions on Saturdays.

Development Training Teams

This season, we are so proud to be providing opportunities to develop our Prep athletes hoping to move into the Allstar stream, our U12 Rising Stars, our Intermediate athletes, and our most Advanced athletes learning the ropes at Level 7! We know that all four Development Streams will be very popular. There is the chance of some of our Development Streams competing/exhibiting at one end-of-season event.

USA Travel Teams

This season, we are hoping to take bid-winning teams to Orlando, Florida for the second time in April/May 2025. We can't wait! You can read more about our International Trip(s) in our International Handbook. Currently, we hold FOUR BIDS - three for the All-Star World Championship, and Icons for IASF Worlds - the most prestigious cheerleading event in the World. You can read more about our International Trip(s) in our International Handbook.

Monthly Training/European Travel Teams

We are so excited, for the fifth season, to be able to run our International Monthly Training Program. This season, we are hoping to field teams to travel to ECC in Germany (June 2025). We can't wait! You can read more about our International Trip(s) in our International Handbook.



What Else Do We Offer?

Stunt Groups

At selected competitions that we are already attending, we will invite our strongest stunters to form small teams of 4 or 5 athletes for a Stunt Group routine - 1.5 mins of pure stunting! These athletes will train for half an hour a week at a time to suit them and their coach. These teams train weekly and are invite-only.

Dance Team(s)

Within our Youth Program, we intend to continue the great work of our dance program and continue Youth POM, Ivy. The team is open to athletes of ages 7-13, as a crossover from cheer or interested in pursuing Dance only. This team trains exclusively in our Dance Studio.

Flyer Classes

This class (three per week) is highly recommended for all flyers across all our teams. Our Elite flyers will be required to attend one per week at least. A home program will be provided instead if flyers have a prior commitment and cannot attend live. Bases are very welcome to join us too - stretching benefits everybody!

The cost of this class is INCLUDED in your monthly fees.

Stunt Classes

We run an invite-only Stunt Class once per week for those athletes who are progressing their stunting to the next level. Stunt Class covers levels 3-5, and works on stunts, baskets and pyramid work. Attendance is expected each week, but the class does NOT compete.

Private, 1-2-1 Coaching

Private classes are the best way in which your athlete can progress their tumbling, basing and flying skills. The slots for these are posted on our Private Groups and can be booked when they become available. These are always extremely popular! Whilst most classes are 1-2-1, there will be options in some instances to share a slot with another athlete.

Junior Coaches Program

Our Junior Coaches Program is a shining jewel in what we do here at WRC. We offer our athletes aged 11-16 to develop their coaching skills by either shadowing a main coach, and assisting in the class, or in some unique cases to take charge of their very own team. This season, we will continue to offer a very small number of Nominated Junior Coaches a 50% discount on their fees as a thank you for any exceptional hard work they put in. Junior Coaches are expected to hold a qualification to Level 1, and commit to the projected Internal Training Dates at the WRC Gym, held on selected weekend dates.



Competitive Teams - Season 10

Novice

Team Name	Intended Division	Stream	Age Grid
<i>Otters</i>	Tiny Novice	Novice	Age 3-6 on 31.08.2024
<i>Orcas</i>	Mini Novice	Novice	Age 5-8 on 31.08.2024
<i>Omni</i>	Youth Novice	Novice	Age 6-11 on 31.08.2024
<i>Ohana</i>	Junior Novice	Novice	Age 8-14 on 31.08.2024

Prep

Team Name	Intended Division	Stream	Age Grid
<i>Ospreys</i>	Tiny Prep 1	Prep	Age 3-6 on 31.08.2024
<i>Opal</i>	Mini Prep 1	Prep	Age 5-8 on 31.08.2024
<i>Oblique</i>	Youth Prep 1	Prep	Age 7-11 on 31.08.2024
<i>Onyx</i>	Junior Prep 1	Prep	Age 9-14 on 31.08.2024
<i>Ovation</i>	Senior Prep 1	Prep	Age 12+ on 31.08.2024

Allstar

Team Name	Intended Division	Stream	Age Grid
<i>Origin</i>	U8 Level 1	Allstar	Birth Year 2016-2020
<i>Olympia</i>	U12 Level 1	Allstar	Birth Year 2012-2017
<i>Oracle</i>	U12 Level 2	Allstar	Birth Year 2012-2017
<i>Odyssey</i>	U14 Level 1	Allstar "ASW Bid"	Birth Year 2010-2015
<i>Optimum</i>	U14 Level 2	Allstar "ASW Bid"	Birth Year 2010-2015
<i>Obsidian</i>	U14 Level 3	Allstar	Birth Year 2010-2015
<i>Oasis</i>	U16 Level 1 Small	Allstar	Birth Year 2008-2013
<i>Outlaws</i>	U16 Level 2	Allstar	Birth Year 2008-2013
<i>OpuleNT</i>	Open Non-Tumbling 2/3	Allstar	Birth Year 2009 and older
<i>Oblivion</i>	Senior Level 1/2	Allstar	Age 12+ on 31.08.2024
<i>Orpheus</i>	Senior Level 3	Allstar	Age 12+ on 31.08.2024

Elite

Team Name	Intended Division	Stream	Age Grid
<i>Obsession</i>	Senior Level 4.2	Elite "ASW Bid"	Age 12+ on 31.08.2024
<i>Icons</i>	Level 5	Elite "Worlds Bid"	TBC
<i>Idols</i>	Open Non-Tumbling 6	Elite	Birth Year 2009 and older
<i>Infinity</i>	U16 Level 1 Large	Elite	Birth Year 2008-2013
<i>Orbit</i>	U16 Level 4	Elite	Birth Year 2008-2013

Development

Team Name	Intended Division	Stream	Age Grid
<i>Divine</i>	U12 Rising Stars	Development	Birth Year 2012-2018
<i>Divas</i>	Prep moving to Allstar	Development	All ages
<i>Diamond</i>	Level 4	Development	Birth Year 2015 and older
<i>Dream</i>	Level 7	Development	Birth Year 2010 and older

IMPORTANT

All teams are PROJECTED until the conclusion of Placement Week, when all teams planning to run as a Competitive Squad will be confirmed. All timetabling is based on the availability of the athletes, and will be confirmed upon Placement Week.

Competition Schedule - Season 10

Please find our proposed Competition Schedule for Season 10. All events will be finalised upon Placement Week.

Event Name	WRC Showcase	ICC Northerns	BCA Super Classic/Cheer Bid Battle	FC Circus & Essentials	ICC Nationals	BCA Nationals	Cheer City Nationals	FC Nationals	ICC BOC	ICC Summer Jam
Event Date	Sunday 15th Dec 2024	18-19th Jan 2025	25-26th Jan 2025	1-2nd March 2025	29-30th March 2025	24-25th May 2025	31st May-1st June 2025	21-22nd June 2025	Sat 28th June 2025	*TBC* July 2025
Event Location	WRC Gym	BEC, Trafford Park	NAEC, Coventry	EIS, Sheffield	Notts Ice Arena	Int'l Centre, Telford	EIS, Sheffield	B'mouth Int'l Centre	Notts Ice Arena	Norbreck Castle, Blackpool
Novice	Yes	Yes	No	Yes	No	No	Yes	No	No	Yes
Prep	Yes	Yes	No	Yes	No	No	Yes	No	No	Yes
Allstar	Yes	Yes	No	Yes	Selected Teams	No	Yes	Selected Teams	Yes	Yes
Elite	Yes	Yes	Selected Teams	Yes	Yes	Selected Teams	Selected Teams	Yes	No	No
Development	Yes	No	No	No	No	No	No	No	No	Selected Teams

Selected Teams will be competing at the events listed. Final decisions will be made regarding their attendance during Placements, and a final Competition Schedule will be communicated in your Placement Email.

Attendance at ICC BOC in Nottingham will only be confirmed for teams holding bids to this event. These can be earned at this year's Summer Jam, plus Northerns in January 2025.

Please also be aware of each competition's **Red Zone** period, which is strictly enforced to ensure the success and confidence of the athletes and the routines they are part of:


- ICC Northerns - Monday 6th January
- BCA Super Classic/Cheer Bid Battle - Monday 13th January
- FC Circus and Essentials - Monday 17th February
- ICC Nationals - Monday 17th March
- Cheer City Nationals - Monday 19th May
- Future Cheer Internationals - Monday 9th June
- ICC Battle of Champions (Bid Dependent) - Monday 16th June
- ICC Summer Jam - TBC



All days and times will be confirmed to us as soon as we have block schedules, which are usually released around September time. Exact timings of competition are only released to us a small number of weeks before the event in question. Please keep the whole day free until we can confirm these times. All athletes are expected to attend each competition for the full season with their team - it is likely they will be moved into a Recreational Stream if they cannot commit to one of the listed events.

Tumbling Academy

We are continuing the great work of our wonderful WRC Tumbling Academy in Season 10! All timings are on SATURDAYS.

<i>Tumble Group</i>	<i>Day/Time</i>	<i>Age</i>	<i>Working On</i>
Amber	9.00-10.30am	Under 8s	Front and Back Walkovers
Orange	9.00-10.30am	Under 12s	Front and Back Walkovers
Peach (Otters)	9.45-10.30am	Under 6s	Entry Level 1
Coral	10.15am-12.15pm	All Ages	Level 4 Skills + 
Red	10.15am-12.15pm	All Ages	Level 5 Skills +
Maroon	10.15am-12.15pm	All Ages	Level 6 Skills +
Turquoise	12.00-1.30pm	All Ages	Entry/Intermediate Level 3
Teal	12.00-1.30pm	All Ages	Elite Level 3 Skills
Sapphire	12.00-1.30pm	All Ages	Entry/Intermediate Level 4 <i>Emphasis on Standing Tumbling</i>
Rose	1.15-2.45pm	Under 16s	Front and Back Walkovers
Blush	1.15-2.45pm	Under 8s	Elite Level 1 Skills
Pink	1.15-2.45pm	Under 12s	Elite Level 1 Skills
Lavender	2.30-4.00pm	Under 12s	Entry/Intermediate Level 2
Lilac	2.30-4.00pm	Under 18s	Entry/Intermediate Level 2
Indigo	2.30-4.00pm	Under 18s	Elite Level 2 Skills

How WRC's Tumbling Academy Works

All WRC athletes are entitled in their monthly fee to one tumbling class per week on top of their cheer class, and each athlete is heavily encouraged to take it. Tumbling is a HUGE part of our routines, and these are the primary opportunities to perfect existing skills and gain new ones.

Our Head of Tumbling, Courtney Gorman, coaches tumbling on a Saturday alongside other members of our coaching team. Our groups are kept small and skill focused, and we pride ourselves on perfection of skill before progressing to the next, in order to build the necessary foundations for a successful tumbling journey.

All athletes will be told their tumbling cohort upon joining the program, usually following a short informal assessment of their current skill set during Placement Week. If your athlete is part of the main Placement Week for Season 10, this will be confirmed to you in your Welcome Email. The above groupings are subject to wiggle room and will be confirmed upon Placement Week - we always wish to build the most appropriate groupings for the athletes.



Payments and Fees

Please find below a breakdown of all expected costs to be a part of our program. In Season 10, we are moving to a model that allows for more flexibility with our competition entry payments, which has enabled us to DROP our monthly fee cost. All hours quoted include Cheerleading AND Tumbling.

Team Name	Fees per month: Payable on 1st Sept-July inclusive via Coacha	Competition Fees: Payable in 3 different ways***	Extra Mandatory Costs: Payable by 30th September 2024 via Coacha
Oysters (Recreational) (1 hour per week)	£30 <i>(Per 6 week block)</i>	N/A	N/A
Tumbling (1.5-2 hours per week)	£25	N/A	N/A
Otters (1.5 hours per week)	£30	£123*	Music - £18 Bow - £10
Novice/Prep Teams (2.5 hours per week)	£40	£123*	Music - £18 Bow - £10
Prep/ <u>Allstar</u> Teams (3.5 hours per week)	£45	£123*	Music/Choreo - £35 Bow - £10
<u>Allstar</u> Teams (Regionals attendees) (4 hours per week)	£55	£123*	Music/Choreo - £35 Bow - £10
<u>Allstar</u> Teams (Nationals attendees) (4 hours per week)	£55	£184*	Music/Choreo - £35 Bow - £10
Worlds/USA Program (4-6 hours per week)	£65	£245*	<i>External</i> Music/Choreo - TBC** Bow - £12-£15
Development Teams (3-4 hours per month)	£20	£30*	Bow - £10

***COMPETITION FEES UNCONFIRMED AT THIS TIME** - These estimates are based on competition prices paid during Season 9. These fees are based on ONE athlete entering any event with ONE TEAM. Crossover costs are detailed on the following page, and will be added to any total Competition Fee cost, whether in instalments or pay-per-event. A full breakdown of all costs, provided we have had them confirmed by the Event Providers, will be given to you in your Welcome Email at the end of July.

****EXTERNAL CHOREOGRAPHY FEES UNCONFIRMED AT THIS TIME** - Estimated Music and Choreography costs remain at approximately £150-190 for a combination of licensed music plus external choreography, depending on which team is accessing it. Any changes to this estimate will be communicated before a firm decision is reached.

*****COMPETITION FEES PAYMENT OPTIONS** -- please note these are non-refundable and full payment is expected.

- Payable in one go, on/before 30th September 2024
- Payable in three (unequal) instalments by/on 30th September, 31st January and 31st March. September's instalment will be heavier to reflect the deadlines set by the Event Providers in question.
- Payable per event, by the deadline set by the Event Provider. Dates range from November through to April inclusive.

EXTRA OPTIONAL COSTS TO CONSIDER - Spectator Tickets to events will range from £55-£150 for the whole season, depending on which events your athlete/family is attending. Most of these tickets can be ordered through WRC, and some directly through the Event Providers. Most events shouldn't require a hotel stay and this remains optional for families. We do not provide transport to the event - please consider petrol and parking expenses too.

Payments and Fees

All payments for monthly fees, and one-off payments for uniforms, optional kit ordered and spectator tickets will be taken via our software system, Coacha.

Your monthly fee INCLUDES

- All training fees for your team(s)
- All Tumbling Academy classes on a Saturday
- All insurance costs and contributions
- All coaching and venue costs

All other costs come as extras and are NOT included:

- Competition Entry Fees (as charged by each individual Event Provider)
- Spectator Tickets to watch your athlete at competition - *a parent/guardian is required for athletes 11 years old and younger*
- Competition Uniform and Bow - *for new athletes only*
- Any OPTIONAL training kit, such as tshirts, hoodies, crop tops and shorts, etc.
- Choreography and Music contributions (which vary from team to team)
- Any costs associated with International Travel, such as flights and accommodation

Please see our Fees, Finances and Refunds Policy on our website for a full list of terms and conditions relating to all finances and monies coming into our club.

We NEVER wish finances to be a barrier to participation here at WRC, and invite you to speak to us if you have concerns. We may be able to help!

Crossover Information and Sibling Discounts

- A CROSSOVER ATHLETE is an athlete who trains and competes with more than one team within the WRC program. Athletes may be invited to be a crossover if we believe they will add value in their second team, and/or it will help them grow as an athlete.
- No WRC athletes can compete with more than three teams as per crossover rules for UK Cheerleading. This does not apply to Development Teams, Monthly European Travel Teams, and Stunt Groups.
- All crossover athletes will have an extra £22 added onto their monthly bill to cover the extra training cost, rather than pay full price for the second team.
- If they train with a third team, this will cost £12 on top (£34 per month total for teams two and three).
- You will be expected to pay full price for your first team, and the discount will be applied to subsequent team(s).
- All crossovers will also be expected to pay a discounted rate to Event Providers for their athlete's subsequent teams, on top of their initial entry. This can vary from £60-150 for all events across the season, depending on which crossovers you have.
- We offer a 10% sibling discount to parents who are paying for a second/third athlete, regardless of the household where the athlete resides, on the less expensive monthly fee(s).

Uniform and Training Kit

Competition Uniform - Allstar Program

Our main Allstar Competition Uniform is worn by all teams in our Allstar, International and European/USA Travel Teams (aside from Icons). It consists of a rhinestoned leotard with mesh on the midriff, and a skirt with built in modesty shorts. These are £170 and it is a requirement for all athletes to have one. We do sell some second-hand from alumni who are willing to sell.



Competition Uniform - Novice and Prep Program

Our Novice/Prep Program is worn by all teams in our Novice and Prep streams (aside from Ovation and Otters). It consists of a black top with rhinestoned detail, and a skirt with inbuilt modesty shorts. These are £70 and it is a requirement for all athletes to have one. We do sell some second-hand from alumni who are willing to sell.



Competition Uniform - Icons (IASF Worlds Team)

The Icons uniform consists of a rhinestoned leotard, with the Icons name, with mesh on the midriff. The skirt is identical to the program skirt, to allow for athletes to use for multiple seasons and for easy exchange if they are a crossover. The full uniform is £175 per kit, but those purchasing an Allstar Uniform in addition will only be expected to purchase the top at £110, to interchange with the program skirt.



Training Kit - OPTIONAL

Each season, we sell a number of branded WRC training kit such as tshirts, vests, hoodies, sherpas, etc, that can be bought as optional extras. We do not require that any athlete purchases any optional kit, but we do recommend that athletes purchase at least a tshirt so they can feel like part of the team on competition day. We are excited to release this season's designs soon!

Extras for Competition Wear

All athletes will need additionally:

- Bow, £8-15, which athletes can receive from us
- Plain WHITE trainer socks, which athletes source themselves
- Plain WHITE trainers, which athletes source themselves. Many of our athletes wear Nfinity Cheer Shoes, but we do not require them.



The Small Print - IMPORTANT

- All our policies can be found on our website. We'd like to draw particular attention to our Attendance Policy, which is strictly and fairly enforced for the benefit of all our teams.
- We expect all our athletes to be good attenders, display good punctuality, and be fantastic team mates in and out of the gym. If any athletes fall below these standards, we will open communications with parents as to any necessary next steps and, if applicable, how we may be able to support.
- All adult athletes and parents will be expected to sign a Code of Conduct to help manage expectations for Season 10 - you can find a copy here:
<https://forms.gle/VXSKGzZPMK8MagXo9>
- White Rose Cheer runs in the same way as any Non-Profit Organisation, which means that any excess income the club makes gets re-invested into the club to make the athletes' experiences as good as they can be. Non-payment and late payments hits us very, very hard. Please see our Fees, Finance and Refunds Policy to be aware of our procedures in this area which we have to strictly enforce.
- All teams in our Prep, Allstar/International and Elite stream will have a special Choreography Day (occasionally, two days). These dates are mandatory to be able to participate in these teams.

